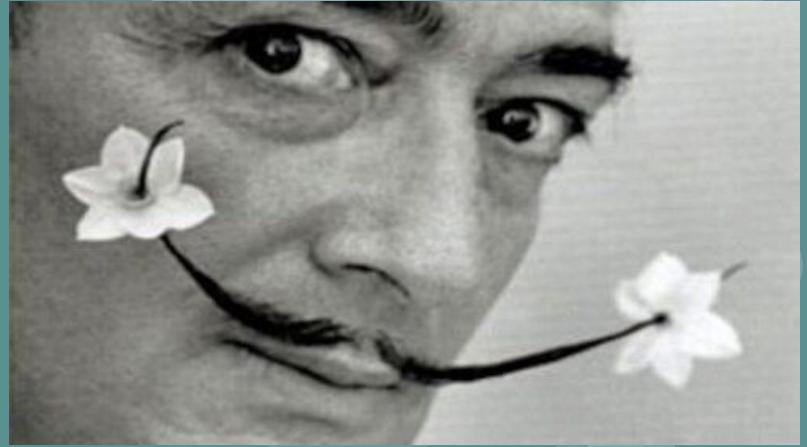


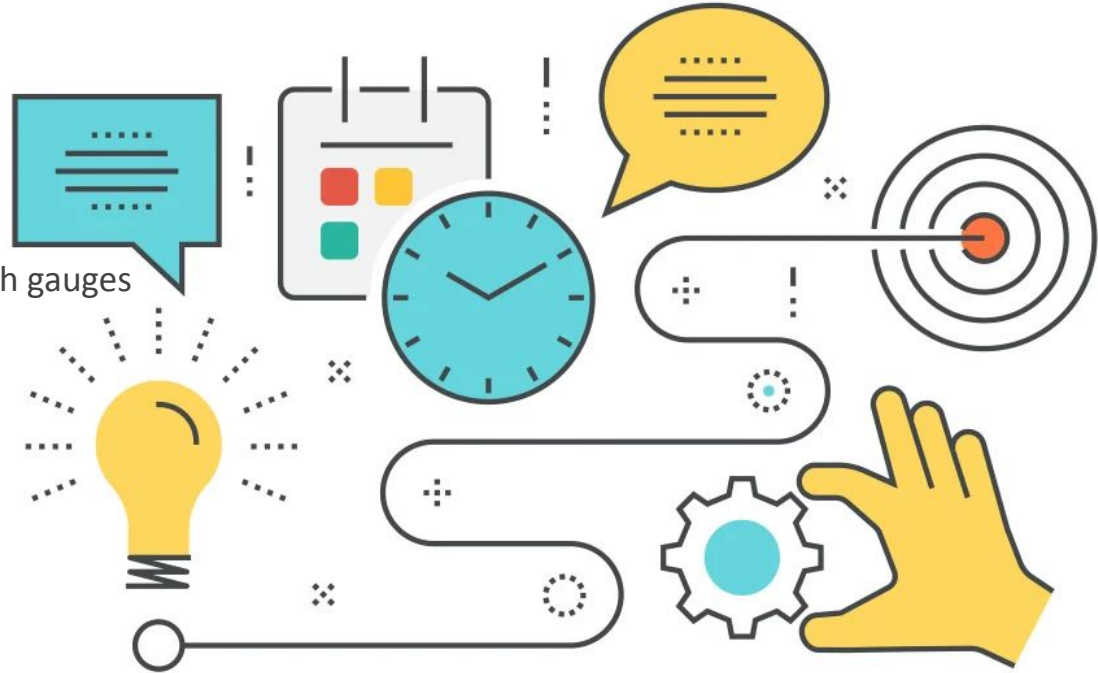
Eccentric Turning

Tim Johnson
Santa Cruz Wood Turners
22-October, 2022



Process

- Acquire Eccentricity
- Gather Ingredients
- Make Wood Round
 - Cylinder
 - Two tenons for depth gauges
- Mark Centers
- Make Wood Weird
 - 1 to 2
 - Mark Depth
 - 2 to 3
 - 3 to 1
- Finish ends
- Resources
- Bonus!



Eccentricity



Concentric



Partially
eccentric



Fully
eccentric

Ingredients





Cylinder w/Tenons





The Magic Marks





Trusting Your Chucking Skills

1 to 2





If Consistency Is Your Thing





Looking Weird

2 to 3





Most Weird

3 to 1





Resources

- [Barbara Dill goblet demonstration](#)
- [Barbara Dill Gallery](#)
- [Mr. Interwebs](#)

Bonus! Peppermills

Tim Johnson
Santa Cruz Wood Turners
22-October, 2022



Fun. Fast. \$\$!



But wait, there's more...



And more!!!



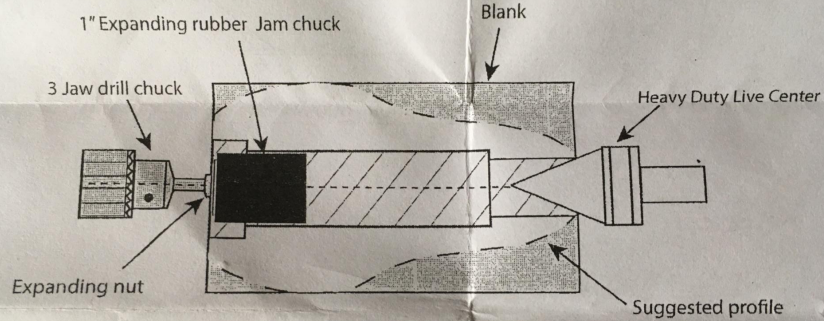
What a Grind!



BORING!

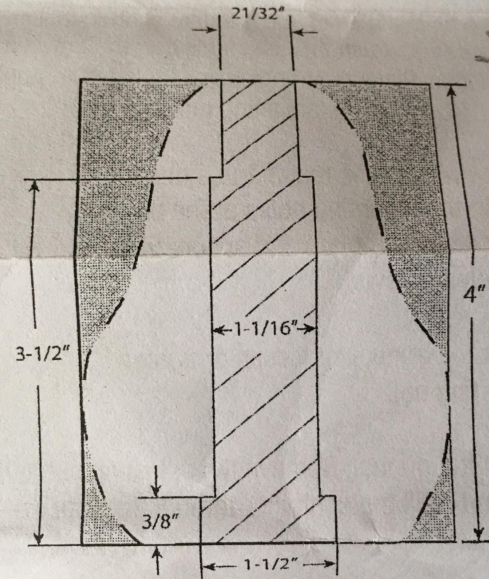
- Use the expanding nut to tighten the chuck inside the hole.
- Bring the tail stock live center into the hole, tighten and lock in the place.
 - Turn the blank to the desired profile. Sand and finish the wood.

Diagram B



© 2012 PSI Woodworking Products, Philadelphia, Pa 19115 v.1/12

Diagram A



Blank

IT'S

SHOWTIME

