

A black DSLR camera with a long lens is mounted on a black tripod. The tripod is positioned on a rocky, desert floor. In the background, there are rolling hills and mountains under a cloudy sky. The text is overlaid on the right side of the image.

Photographing your Work

For Pride, Education, and Posterity

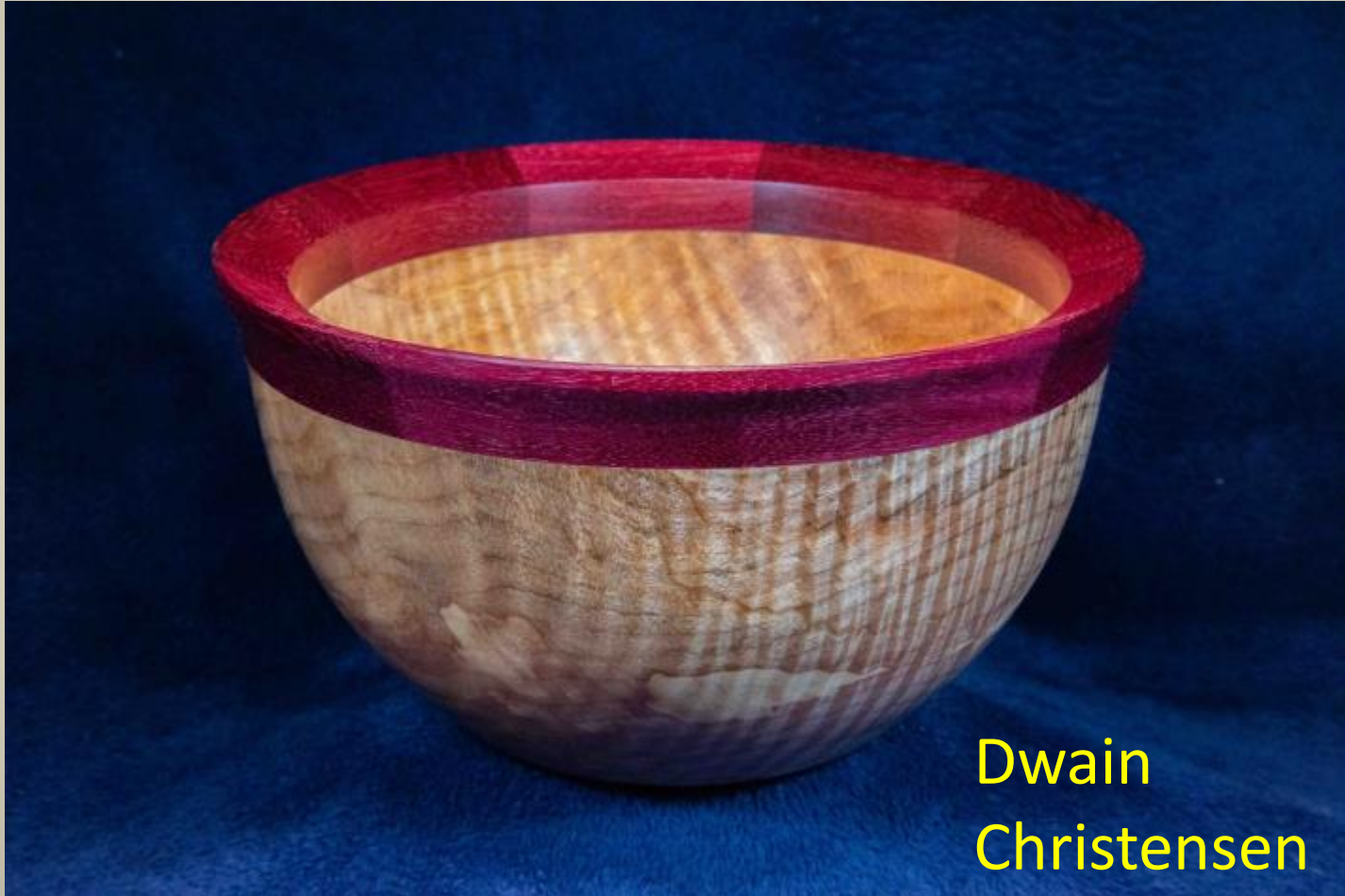
Dwain Christensen

Wells Shoemaker

Santa Cruz Woodturners

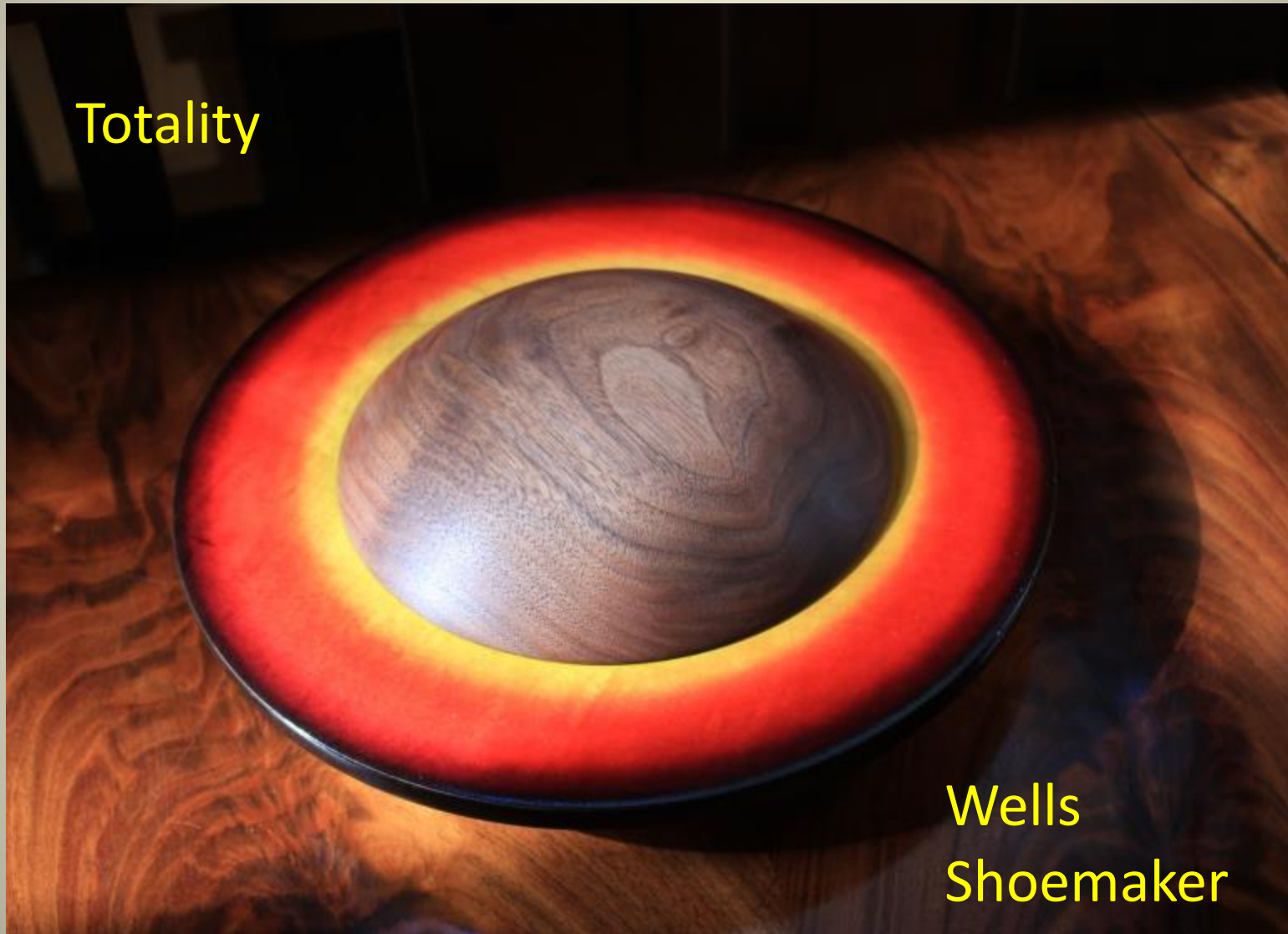
February 20, 2021

Your Presenters



Dwain
Christensen

Totality



Wells
Shoemaker



Live from Texas

Here's What We're Talking About!

Great Photo Examples

From SCW Turners



Raf Strudley



John Wells

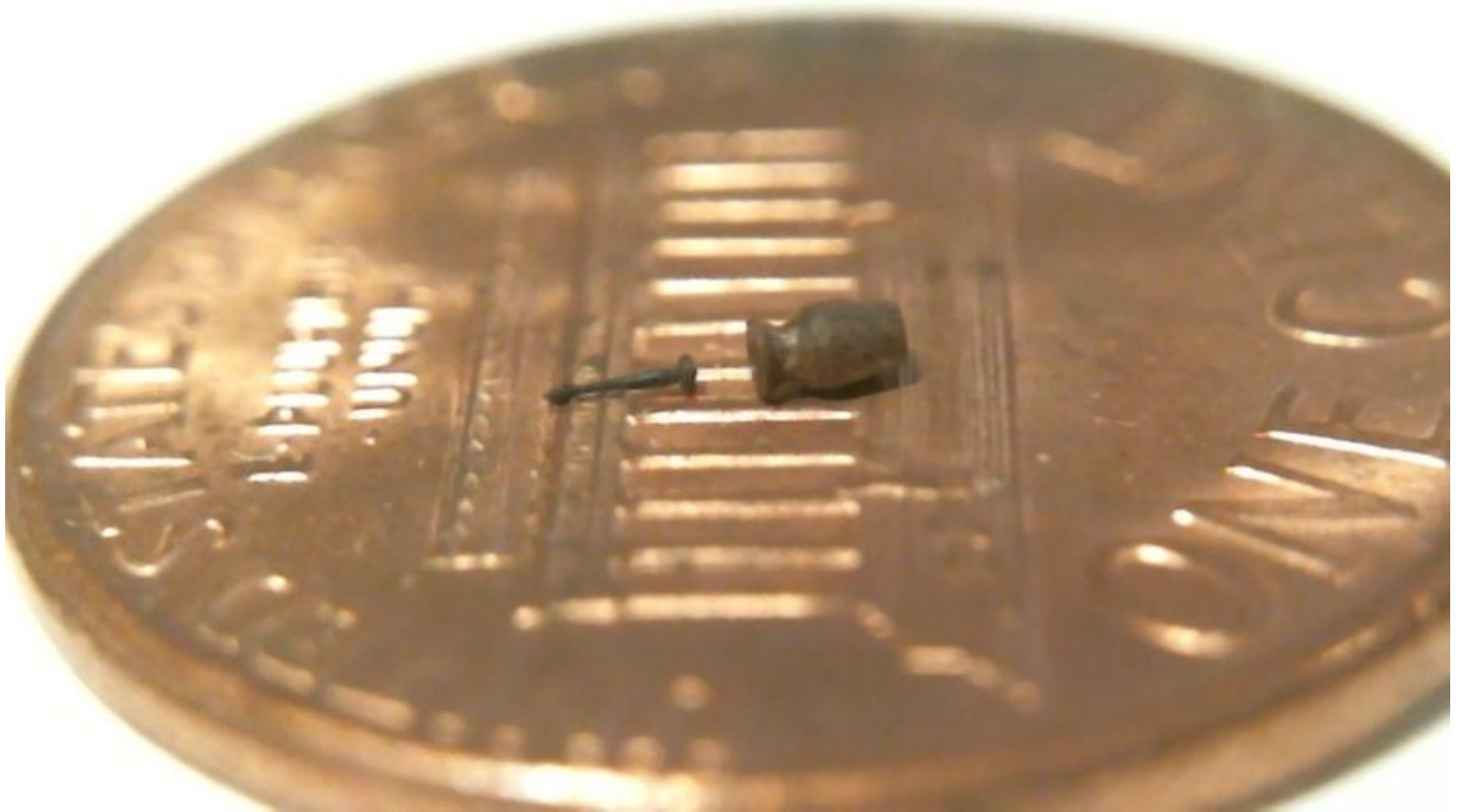


John Wells

Linda Anderson



Maarten Meerman



Maarten's Honey Big Dipper



Hello, Alkaid, Mizar, Alioth, Megrez, Phecda, Dubhe, & Merak

Dwain Christensen

Manzanita Burl and Resin



5.5"D x 9" H

SCW President's Challenge January, 2021

11

Larry Dubia



Tom Eovaldi





Wells Shoemaker

What Goes into Effective Photos?

1. Interesting subject matter, first! *This we have!*
2. Equipment –Dwain
3. Composition –Wells
4. Lighting—Dwain
5. How to share photos—Dwain
6. Q&A, discussion, Wells & Dwain

We're going to discuss those with examples!

Equipment: The Camera



The DSLR (Digital Single Lens Reflex Camera):

PLUS:

- Offers great image quality.
- Good flexibility for adjusting to specific environments.
- Larger file size and format.
- Multiple lens can be used.
- Flash is can be externally mounted.

MINUS:

- Typically higher priced.
- Can give a not-so-great image in “dummy mode”.
- Heavy and hard to transport.
- Bigger file size.

Note:

Tripod is highly recommended for use with an SLR.

DSLR Examples:



Depth of Field

Sharp detail object, soft focus background

Can do this on
purpose with
SLR @ low f stop

Most DSLR now
have easy auto
settings
for close ups



Roy Holmberg
Multimedia...

In Santa Cruz,
naturally

Equipment: The Cell Phone Camera



The Cell Phone:

(Disclaimer - I'm an iPhone user)

PLUS:

- Also very good quality image depending on the version of phone you have.
- Deals with lighting pretty well over-all.
- You always have it / hand held.
- Typically no tripod is necessary.

MINUS:

- File type is jpg and not very "forgiving".
- Getting images off camera can be a chore.
- Not very forgiving in some lighting situations.

This image is a typical setup I use for taking videos while turning. Here a tripod is a must.

Cell Phone:



Composition

Four Guidelines from Wells

1. Feature the object—eyes pulled to attention
2. Minimize distractions—clutter, conflicting colors, boldly patterned backgrounds, glaring light, harsh shadows
3. Context—Bowl on a table, not a car hood
 - Size reference if helpful
4. Angles and representation for intrigue

1. Feature the Object





Raf Strudley



John
Wells

Corrina, Corrina, Where you been so long? -Bob Dylan '65

Corona, Corona, Why you stay'in so long? -Your SCW President '20



2. Distractions: Patterned background, shadows and extraneous “stuff”

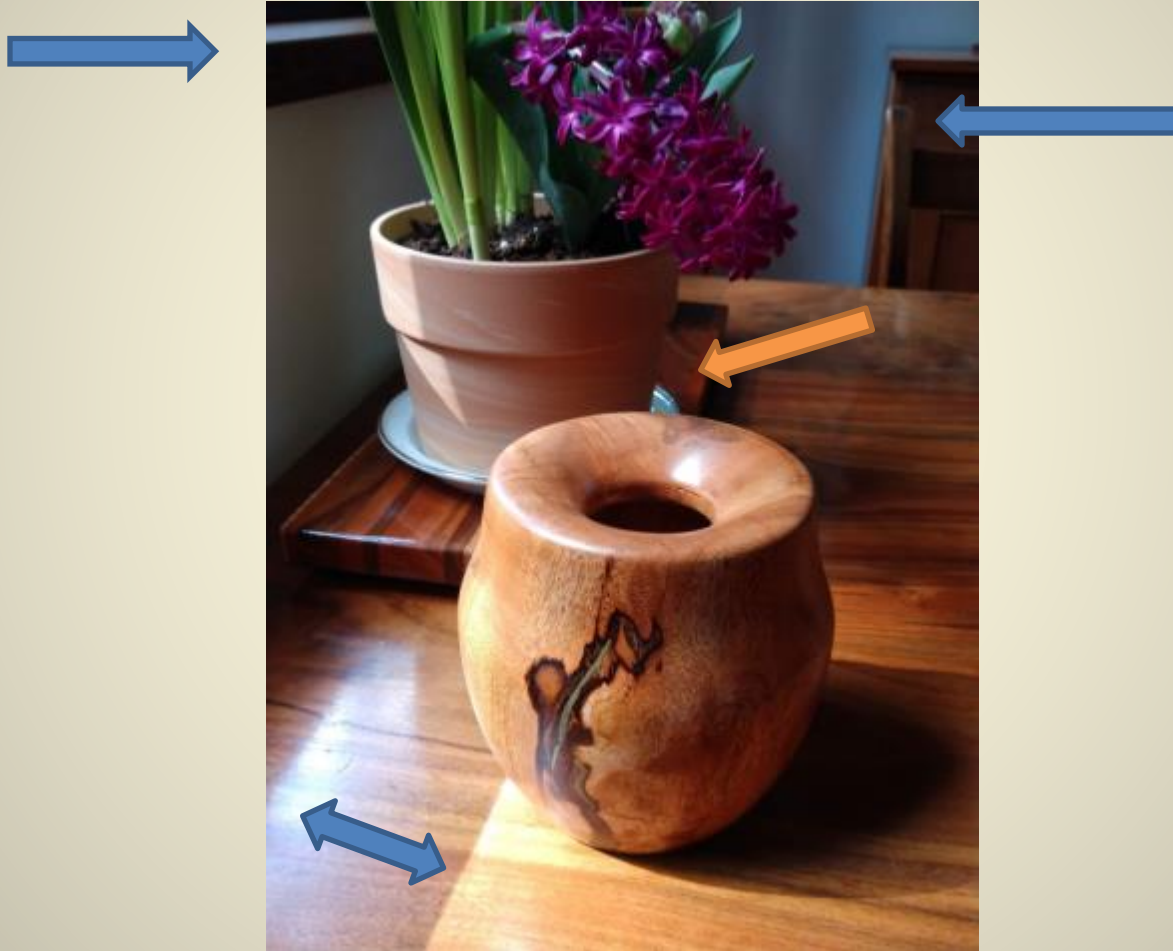


Same turner, better photo



Morgan Taylor

Distracting shadows partial objects in view



Non-competing background



Can delete some, not all distractions



Angular shadow in back, patterns



Cropped on
computer

Same turner, now with
Uniform background, focus on bowl



Dan Aldridge

Non traditional background— White sheepskin



WS

Non traditional background— Black sheepskin



Complementary Backgrounds

Pattern, harsh contrast
...harder to grasp artistry



Color adds soft intrigue and warmth
...not competing with form



Complementary Natural Background



Roy Holmberg

Environmental background...
Blurred, complementary, not conflicting



Sue Broadston's
Bullet Bowl

Natural background

Diffuse light



Aptos
Camo

Natural environment Brilliant sunlight



Wanted to identify this as a “Utah bowl”

Monochrome Paper



Simple, illustrative of plaited grain, no scale...WS

Non conflicting background pattern

Contrast highlights the object



Alaskan Yellow Cedar (AYC) and Aptos Exposed Aggregate (AEA) WS

Polished granite countertop



Avoided
glare

11.5"
platter

Bill Hopkins

3. Context



Show it where it belongs



Natural use



Friend's
garden

At home in the kitchen



Dwain's skateboard deck carafe grasper

Jim Baker

Spoons in process



Note
lemon
for scale

Yes, Bowls *do* come from trees



Bark is visually and contextually perfect. Dan Aldridge's rough outs

Redwood on a Redwood Railing in the Redwoods



OK, this might be a little corny WS

4. Angles and Representation Keep it Interesting!



Linda Anderson—Spalted tanbark oak knotty bowl

What are you trying to show?



Subject was
Texturing

Photo
Illustrated that
aspect...

Not intended
for whole
Bowl display



Subject was nested bowls

WS



Lidded bowls—photo shows the lids... on and off

John Wells

Two views assembled
Most of us will do this with 2 photos



This is pro work Raf

2 photos to show more detail



Ideally similar lighting and style
WS

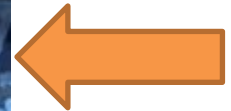


Make
people
think

DC

Size Reference

The Right Hand of Dan



shoemakers
rule, too...

Size Reference—Marble Egg



Utah juniper natural edge WS

Size Gauge—2x6's



Sycamore “dory bowl” WS

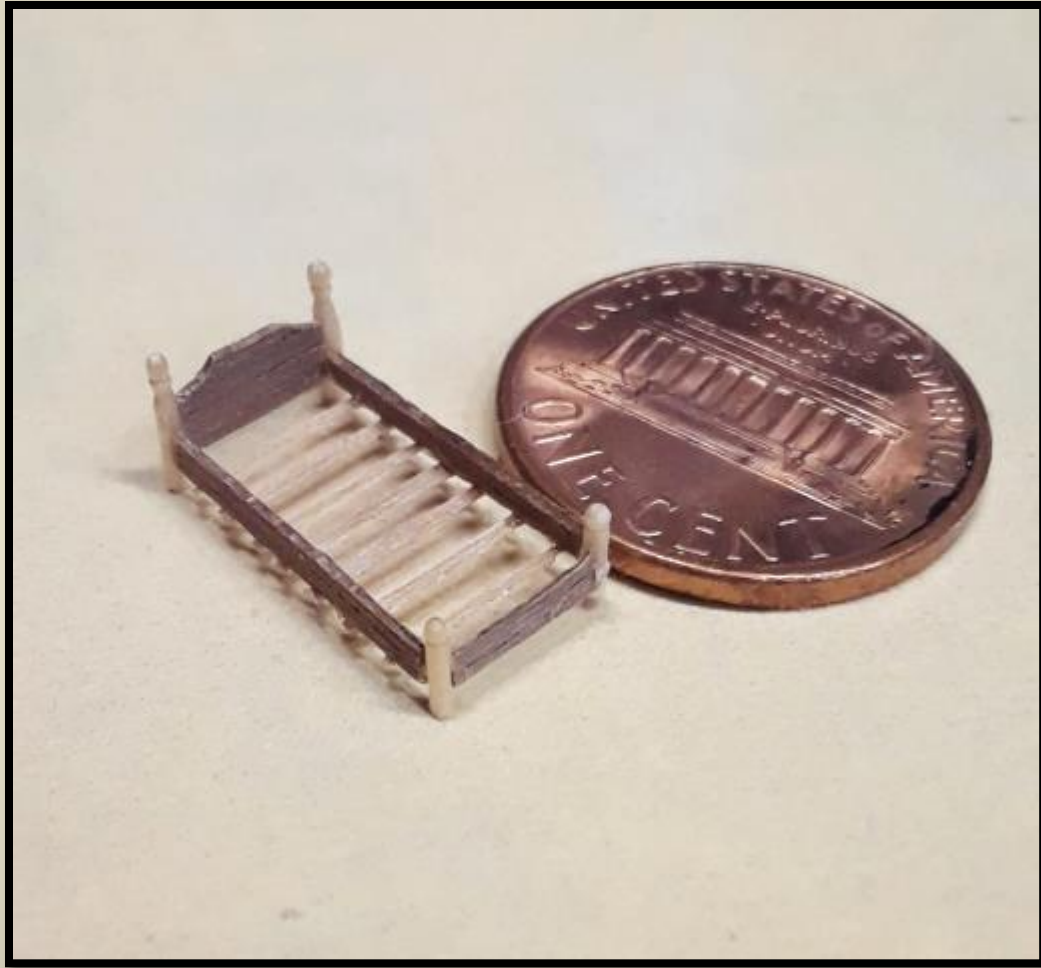
Redwood decking universal “ruler” in Northern California

Size Matters! Big Turner, Big Bowl!



Larry Dubia
and a really
big Kauri bowl

Maarten's Size Gauge



Tooth Fairy Bed

Lighting—Dwain



Lighting is EVERYTHING



- Burn out.
- Even light.

This image:

- Graduated background.
- Light stands
- DSLR with a Tripod
 - Settings in this mode

This image is a typical setup I use for taking images for pieces for sale. Also taken with an iPhone.

Lighting is EVERYTHING



Same object, Different light

Artificial light—glare, dull



Direct sunlight...shadow accents contours rather than distracts



Maple and acrylic platter by Jim Beckett

This light's for Yew

Diffuse natural light
Inadequate in this case

Flash: Runs risk of “burning” out
glare, but highlights warmth



For yew, the color is the main feature...can't afford to lose that

Tabletop: Convenient, but...



Shadows
from
window
frame.
Oops.

Glare not
good...
Not always
easy to
appreciate
at time of
photo

Bay Laurel platter 14" WS

Clean View of Bowl



Would
have
been
even
better if
glare had
been
avoided

Sleek Madrone shallow bowl—Mark Burden

Wooden floor

Neutral color & texture



Avoided harsh shadows and glare despite flash this time

Sharing Files



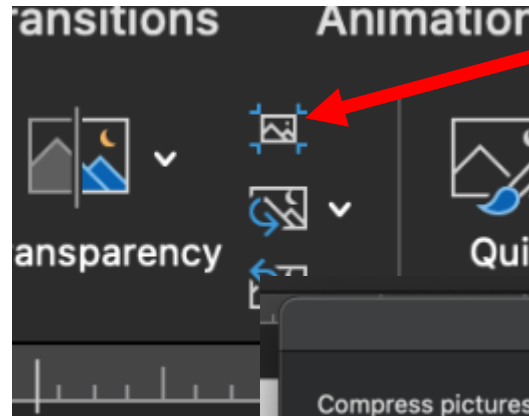
Sharing & Posting

Print Size	Aspect Ratio	Print Size	Aspect Ratio
4x6	2:3	12x18	2:3
4x4	1:1	13x19	13:19
4x4.3	1:1.3	14x18	7:9
5x7	5:7	12x36	1:3
7x7	1:1	16x20	4:5
8x8	1:1	18x24	3:4
8x10	4:5	20x24	5:6
8.5x11	8.5:11	20x28	5:7
8x12	1:3	22x28	11:14
9x12	3:4	20x30	10:15
10x13	10:13	24x30	12:15
10x20	1:2	24x36	6:9
11x14	11:14	27x39	9:13
11x17	11:17	27x40	27:40
12x12	1:1	27x41	27:41
12x16	3:4		
Instagram:			
Horizontal	1.91:1		
Vertical	4:5		
Square	1:1		

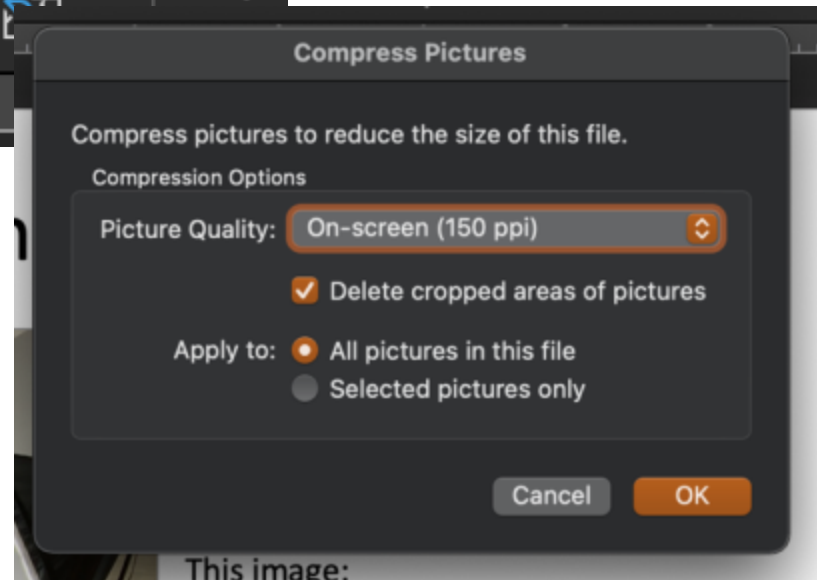
Terms:

- File size – usually refers to megs.
- Image size – refers to the pixel counts or in inches.

For sharing, the smaller is usually better. Some sites will only allow a given “size”. [file and image]



The posting friendly button.



Questions?



President's Challenges

March and April

March—Mutt and Jeff—something large and something small from the same piece of wood



President's Challenge April

Enter the SCW Member Gallery

- 1, 2, or 3 images of work that gives you pride
- jpeg at least 100kb file size...as attachments
- Send to wellsshoemakermd@gmail.com
- Dwain will select the winner!
- We'll post them alphabetically for public view on our website