

Tool Handles...a Virtual President's Challenge for October, 2020

Santa Cruz Woodturners

There are few conceivable benefits of being stuck at home for months while disease stalks the land beyond the moat. One of the "stretch" opportunities might be the time to finally get around to the less urgent jobs that keep your shop and garden shed happy. Loose handles are not happy.

Repairing and replacing tool handles should be a softball task for a person with a lathe and electricity, but it's often easier said than done.

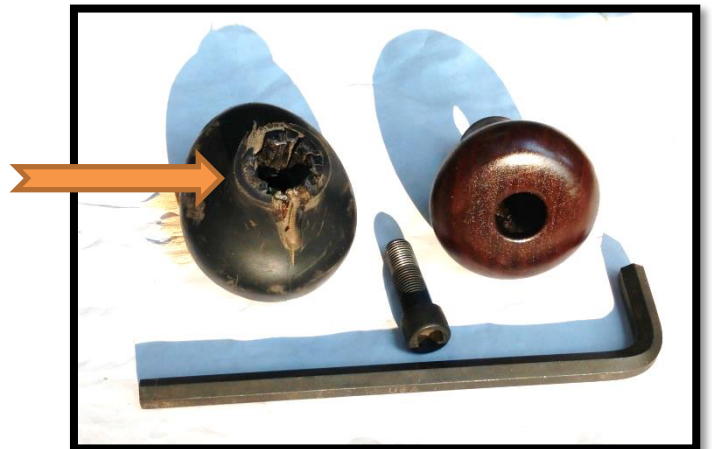
President's Challenge for this month—show us a handle...or another lathe-generated repair that made your shop better since the doors slammed down in March.

Send me a photo(s) and a short description, and we'll put it all together to share.

Here's an example:

I have 3 Porter-Cable 690 routers. One of the most reliable tools ever, but I used them often enough to specialize. As the years went by, they came with different designs for handles. The one below had molded rubber handles secured by a hefty 3/8" bolt with a hex nut head.

The rubber served honorably...maybe for 20 years...but it finally gave up the ghost. Epoxy wasn't good enough, and tool got flopsy.



Using the lathe to turn a new handle out of walnut left over from a table leg project, and the tailstock chuck to counter bore the wooden one with a 3/8" shaft hole and a 5/8" access, I came up with a functional facsimile.





Ready to get back to work.

Looking forward to your creative saves!

Wells Shoemaker
President, SCW